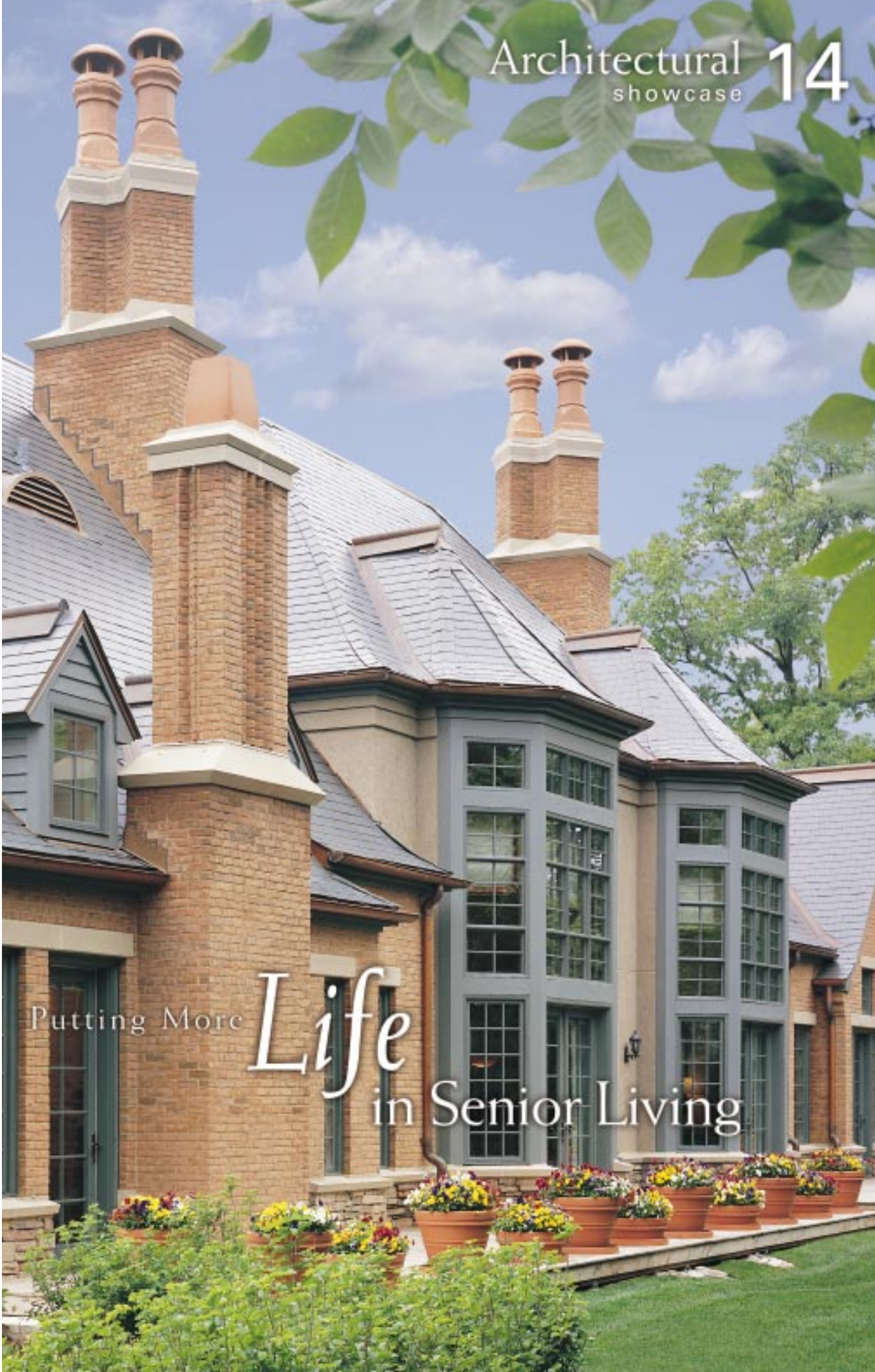




New Urbanist Architecture

Architectural showcase 14

Putting More *Life* in Senior Living



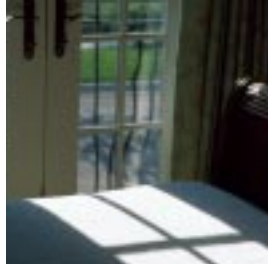
Freedom of choice. Safety and security. An abundance of natural light. These are just a few of the amenities that residents can look forward to at the Garlands of Barrington, a continuing care retirement community near Chicago, Illinois. 🏡 "The first villa we've completed exemplifies the lifestyle of the people who'll live here," says architect Rick Jolson, A.I.A. "The atmosphere is more like a country club than what people typically think of as a retirement home. We wanted an upscale image that accentuates the beauty of the entire community." 🏡 That vision holds true for every building that will comprise the Garlands of Barrington, including elegant villas and independent living apartments, as well as assisted living and skilled nursing care facilities. "Whether people are outside enjoying the sunshine or inside watching the seasons change," Jolson continues, "we want them to enjoy the beauty of their surroundings in style and comfort."



Design Challenge

"We needed to specify high-end products for every aspect of this project. Weather Shield windows and doors fit that profile beautifully."

ARCHITECT ~ Rick M. Jolson, A.I.A.
Torti Gallas and Partners
CHK, Inc.



Design Solution

The design of the villa at the Garlands of Barrington is greatly influenced by Northern European architecture. "We were inspired by several styles, including French Country and English Manor Houses," Jolson says.

The focal point of the villa's interior is a two-story bay window and door combination in the great room featuring Weather Shield® Hinged Patio Doors, mullered together with fixed and operating casement windows crowned by transom units.

"The way the windows and doors are stacked, from tall at the bottom to small on top, the wall gets lighter as it goes up," Jolson explains. "It's a more classic approach, more Gothic in nature." And throughout each room, the location and installation of the windows played a critical role in bringing the entire villa to life.

"The walls are thicker," Jolson says, "so we extended the jambs more than normal. The aluminum brick mould on the Weather Shield windows provides a much better profile on the exterior." On the interior, features like simulated divided lites along with deep sills and jambs were also instrumental for the atmosphere that the design team at Torti Gallas strove to create.

"The client's desire from the beginning was to have the crème de la crème of retirement homes," Jolson continues, "not only how it looks, but from a practical standpoint as well." Because the Garlands of Barrington is a senior community, low maintenance and long-term durability were also key considerations for every product and material specified for the construction of this project.

"I see Weather Shield as an ideal standard for what we needed to achieve here," Jolson concludes. "They had a complete selection of windows to choose from. The knowledge of their salespeople was outstanding. And their follow-through was every bit as impressive as the products they delivered."



"In each room, we lowered the sill height of the windows to bring in more light and make it easier to see outside if you're seated."

ARCHITECT~
Rick M. Jolson, A.I.A.



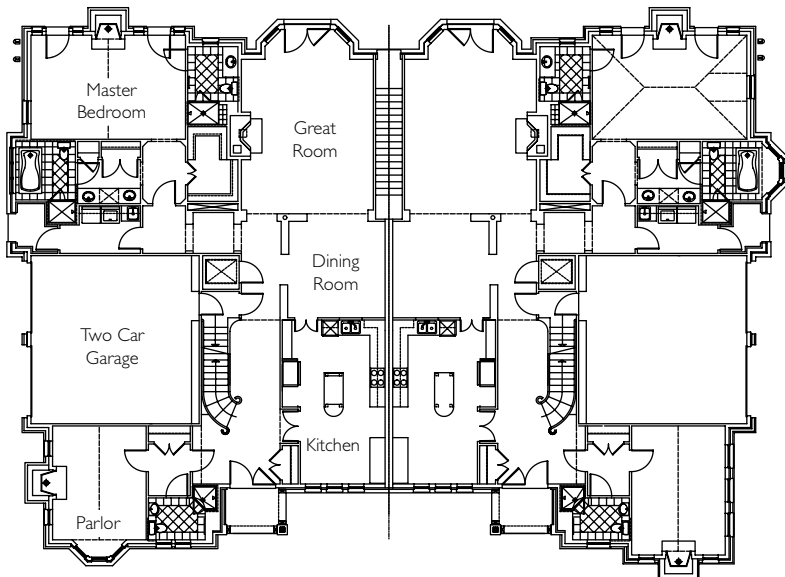


"We situated windows like the clerestory units in the bedroom to get sunlight deeper into the rooms without using skylights."

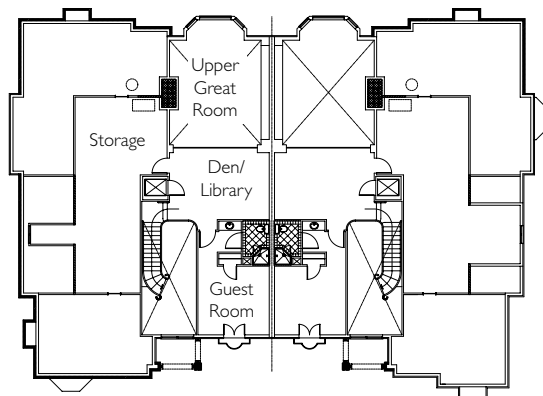
ARCHITECT~
Rick M. Jolson, A.I.A.



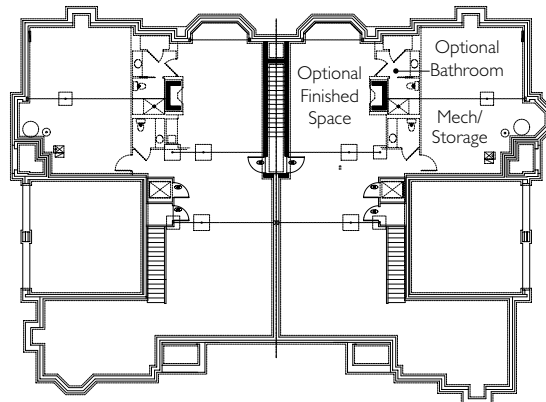
first level



second level



Basement





"Usually, people are more interested in what the home looks like from the curb. Here, you want to bring them around back to see this spectacular wall of glass."

ARCHITECT~
Rick M. Jolson, A.I.A.



Members of the Torti Gallas design team.

Torti Gallas and Partners, CHK, Inc. has been providing award winning architecture, master planning and renovation for a wide range of senior living options for almost 30 years.

As the Director of Torti Gallas' Senior Living Segment, architect Rick M. Jolson leads a design team that takes pride in giving seniors many of the upscale features and amenities found in mainstream custom homes today.

"One of the strong tenets of our office is new urbanism. We try to create spaces where people interact with their neighbors," Jolson says. "For example, rather than create a private enclave in the village of Barrington, we wanted to add a new neighborhood to the community. We're very pleased with the results we're achieving here."

Weather Shield products used for this project

Casements

- 3 — 11– 12 x 20
- 6 — 11– 12 x 68
- 17 — 11– 20 x 68
- 3 — 11– 24 x 32
- 5 — 11– 24 x 68
- 8 — 11– 32 x 68
- 2 — 21– 16 x 54
- 4 — 21– 20 x 68
- 1 — 31– 20 x 68

Casement Transoms

- 6 — 11– 20 x 20
- 2 — 11– 24 x 24

Casement Stationary Picture Centers

- 1 — 11–32 x 54

Direct-Set

- 18 — 2'1¹³/₁₆" x 1'10¹/₁₆"
- 6 — 2'1¹³/₁₆" x 2'7⁵/₈"
- 12 — 2'5" x 1'10¹/₁₆"
- 4 — 2'5" x 2'7⁵/₈"
- 1 — 6'3⁷/₁₆" x 2'5¹/₂"
- 1 — 6'3⁷/₁₆" x 4'11¹/₂"

Inswing French Doors

- 4 — 3-0 x 8-0
- 2 — 4-0 x 6-10
- 2 — 6-0 x 8-0

Product Options used for windows

Garland Gray Contempra Aluma TFT with Aluminum Brick Mould exteriors

Primed Interiors

7/8" Simulated Divided Lite

Bright Brass Hardware on Casement Windows

Insul ThermoGold™ Low E² Glazing

6⁵/₈" Jamb

Product Options used for doors

Garland Gray Contempra Aluma TFT with Aluminum Brick Mould exteriors

Primed Interiors

7/8" Simulated Divided Lite

Antique Brass Multi-Point Lockset & Hinges

Insul Low E² Glazing

6⁵/₈" Jamb

For more information and to view iPIX™ images, visit the Architect's Corner of the Weather Shield website, weathershield.com.



Weather Shield
Windows & Doors

weathershield.com